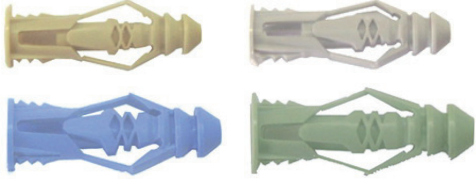
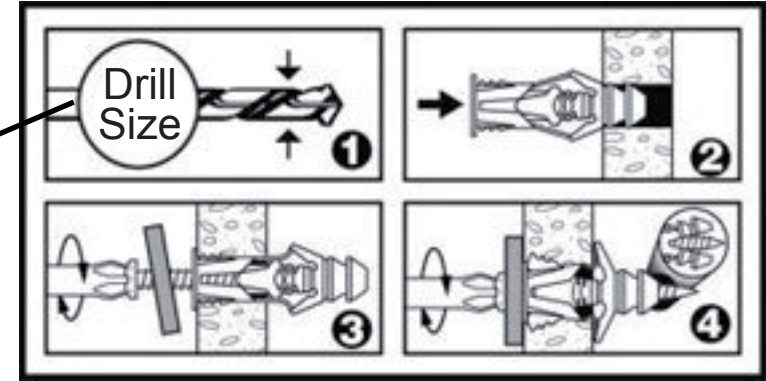


Technical Specification



Installation Instructions



| | Size | Material | Drill Size | PULL Max lbs | PULL Safe lbs | SHEAR Max lbs | SHEAR Safe lbs | PULL Max kg | PULL Safe kg | SHEAR Max kg | PULL Safe kg |
|----------------------|---------------------|--------------|------------|--------------|---------------|---------------|----------------|-------------|--------------|--------------|--------------|
| DRYWALL 3/8" | # 6 (Beige) | Polyethylene | 1/4" | 32 | 8 | 52 | 13 | 15 | 4 | 24 | 6 |
| | # 8 (Gris / Grey) | Polyethylene | 1/4" | 35 | 9 | 60 | 15 | 16 | 4 | 27 | 7 |
| | # 10 (Bleu / Blue) | Polyethylene | 5/16" | 45 | 11 | 75 | 19 | 20 | 5 | 34 | 9 |
| | # 12 (Vert / Green) | Polyethylene | 3/8" | 60 | 15 | 90 | 23 | 27 | 7 | 41 | 10 |
| DRYWALL 1/2" | # 6 (Beige) | Polyethylene | 1/4" | 36 | 9 | 58 | 15 | 16 | 4 | 26 | 7 |
| | # 8 (Gris / Grey) | Polyethylene | 1/4" | 42 | 11 | 70 | 18 | 19 | 5 | 32 | 8 |
| | # 10 (Bleu / Blue) | Polyethylene | 5/16" | 58 | 15 | 92 | 23 | 26 | 7 | 42 | 10 |
| | # 12 (Vert / Green) | Polyethylene | 3/8" | 74 | 19 | 121 | 30 | 34 | 8 | 55 | 14 |
| DRYWALL 5/8" | # 6 (Beige) | Polyethylene | 1/4" | 60 | 15 | 91 | 23 | 27 | 7 | 41 | 10 |
| | # 8 (Gris / Grey) | Polyethylene | 1/4" | 64 | 16 | 102 | 26 | 29 | 7 | 46 | 12 |
| | # 10 (Bleu / Blue) | Polyethylene | 5/16" | 88 | 22 | 154 | 39 | 40 | 10 | 70 | 17 |
| | # 12 (Vert / Green) | Polyethylene | 3/8" | 132 | 33 | 204 | 51 | 60 | 15 | 93 | 23 |
| Concrete 3000 PSI | # 6 (Beige) | Polyethylene | 1/4" | 240 | 60 | 400 | 100 | 109 | 27 | 181 | 45 |
| | # 8 (Gris / Grey) | Polyethylene | 1/4" | 275 | 69 | 500 | 125 | 125 | 31 | 227 | 57 |
| | # 10 (Bleu / Blue) | Polyethylene | 5/16" | 400 | 100 | 800 | 200 | 181 | 45 | 363 | 91 |
| | # 12 (Vert / Green) | Polyethylene | 3/8" | 500 | 125 | 900 | 225 | 227 | 57 | 408 | 102 |

Mbs Sign

2401- Corporate Blvd, Brooksville FL 34604

877-680-4Mbs (4627) Office 352-593-4151 Fax: 352-796-4437

Sales@mbs-sign.us - www.mbs-sign.us